

# Technical data sheet



## Product features

### Display case heated 1x shelf 80x35

<b>Model</b>	<b>SAP Code</b>	00004952
--------------	-----------------	----------



- Device properties: Warmed
- Minimum device temperature [°C]: 30
- Maximum device temperature [°C]: 60
- Opening of device: Two-sided

<b>SAP Code</b>	00004952	<b>Power electric [kW]</b>	0.700
<b>Net Width [mm]</b>	804	<b>Loading</b>	230 V / 1N - 50 Hz
<b>Net Depth [mm]</b>	360	<b>Minimum device temperature [°C]</b>	30
<b>Net Height [mm]</b>	412	<b>Maximum device temperature [°C]</b>	60
<b>Net Weight [kg]</b>	10.50		

# Technical data sheet



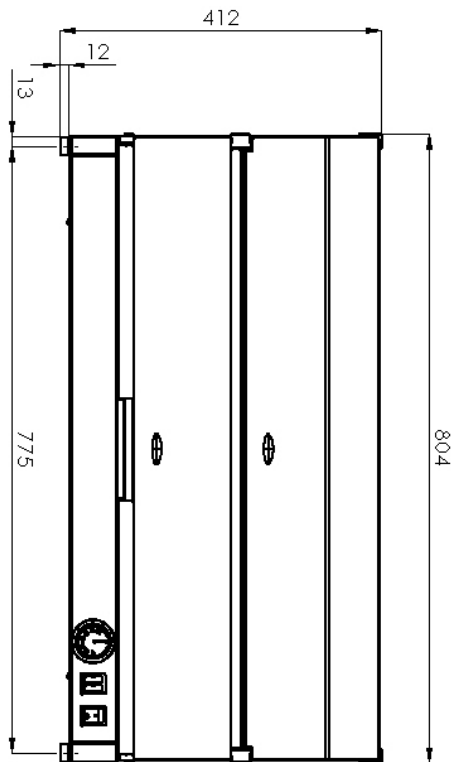
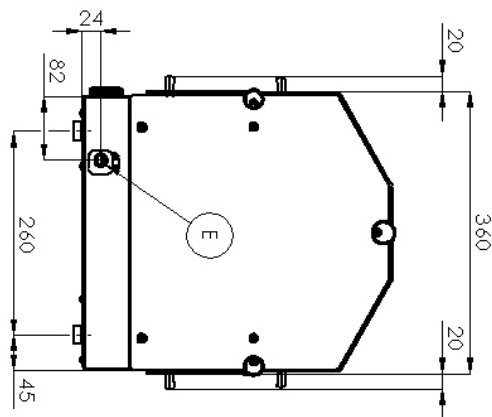
Technical drawing

Display case heated 1x shelf 80x35

Model

SAP Code

00004952



# Technical data sheet



## Technical parameters

### Display case heated 1x shelf 80x35

Model

SAP Code

00004952

**1. SAP Code:**

00004952

**2. Net Width [mm]:**

804

**3. Net Depth [mm]:**

360

**4. Net Height [mm]:**

412

**5. Net Weight [kg]:**

10.50

**6. Gross Width [mm]:**

430

**7. Gross depth [mm]:**

850

**8. Gross Height [mm]:**

300

**9. Gross Weight [kg]:**

12.00

**10. Device type:**

Electric unit

**11. Device properties:**

Warmed

**12. Power electric [kW]:**

0.700

**13. Loading:**

230 V / 1N - 50 Hz

**14. Minimum device temperature [°C]:**

30

**15. Maximum device temperature [°C]:**

60

**16. Opening of device:**

Two-sided

**17. Interior lighting:**

No

**18. Cross-section of conductors CU [mm<sup>2</sup>]:**

0,5

- Výkon (kW): 2,4-3,3 (230 V)